



Hill Farming Heritage in the Cheviot Hills, UK

Chris Dalglish
Chris Gerrard
Skye McAlpine Walker

Contacts:
c.m.gerrard@durham.ac.uk
cdalglish@yorkat.co.uk

Photo: Chris Strickland (www.photographerchrisstrickland.com)

A historic farming landscape



Photo: Chris Strickland (www.photographerchrisstrickland.com)

Cheviot Hills, IRIS case study area

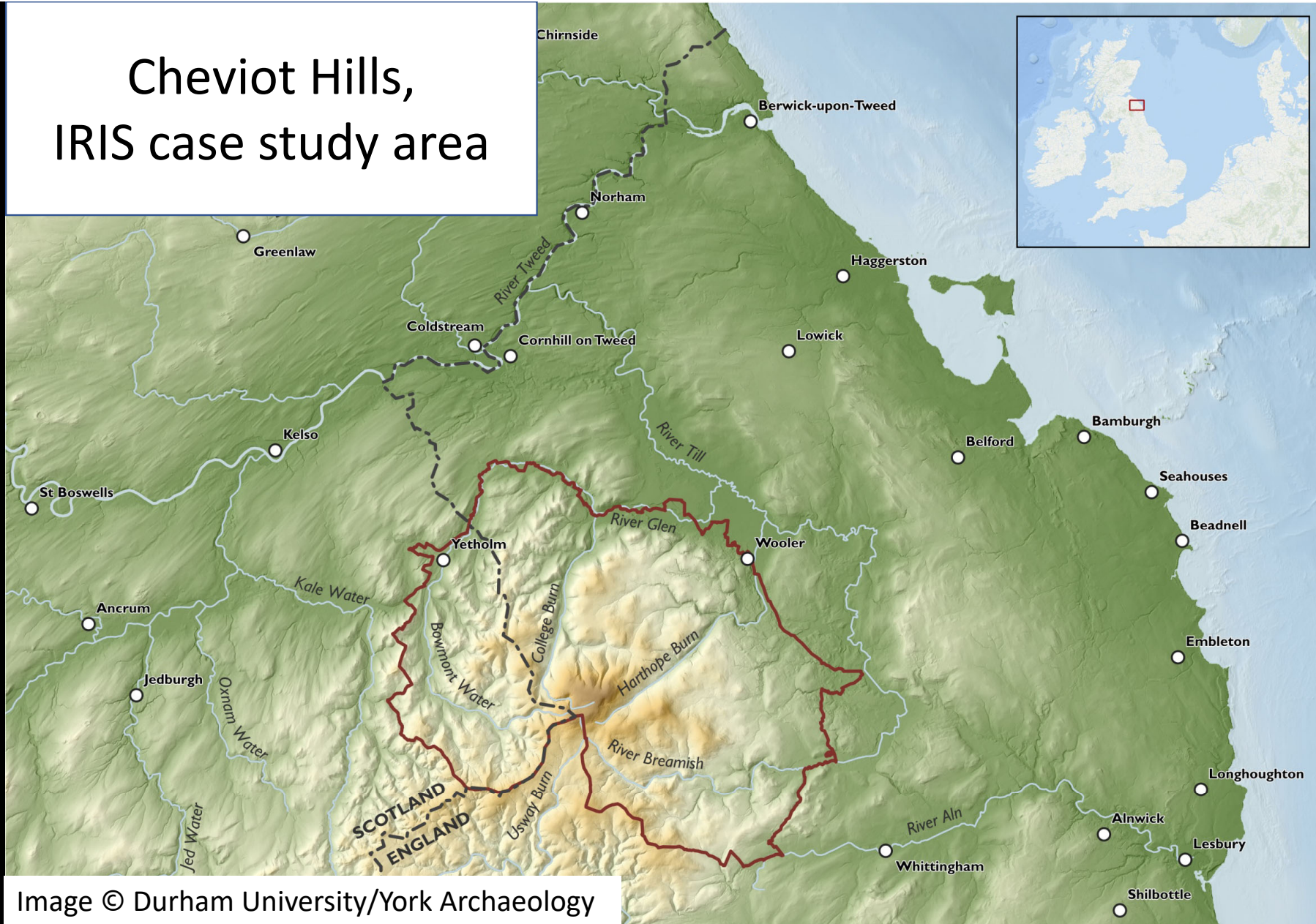
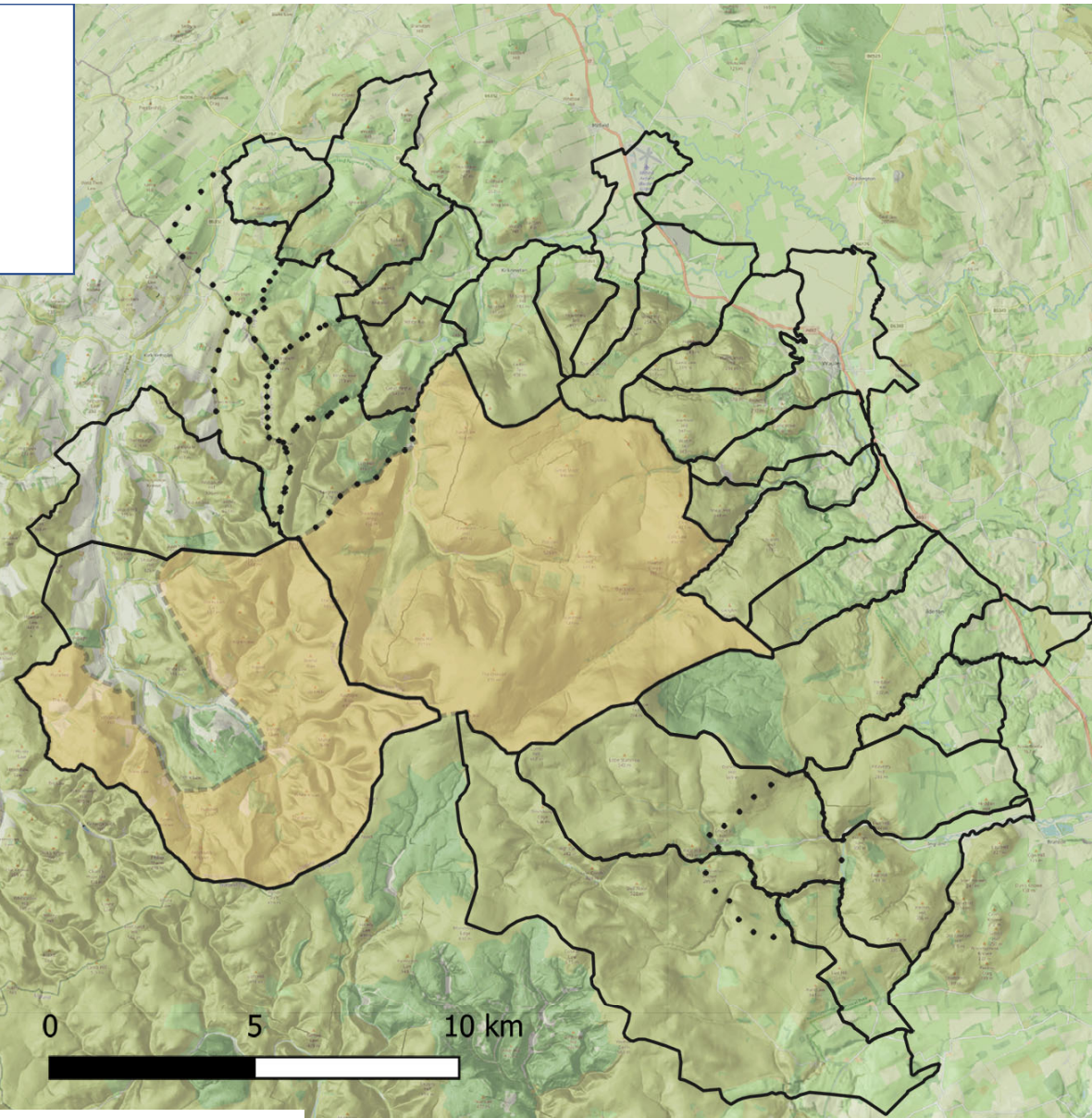


Image © Durham University/York Archaeology



Photo: Chris Strickland (www.photographerchrisstrickland.com)

Medieval townships & 'forests'

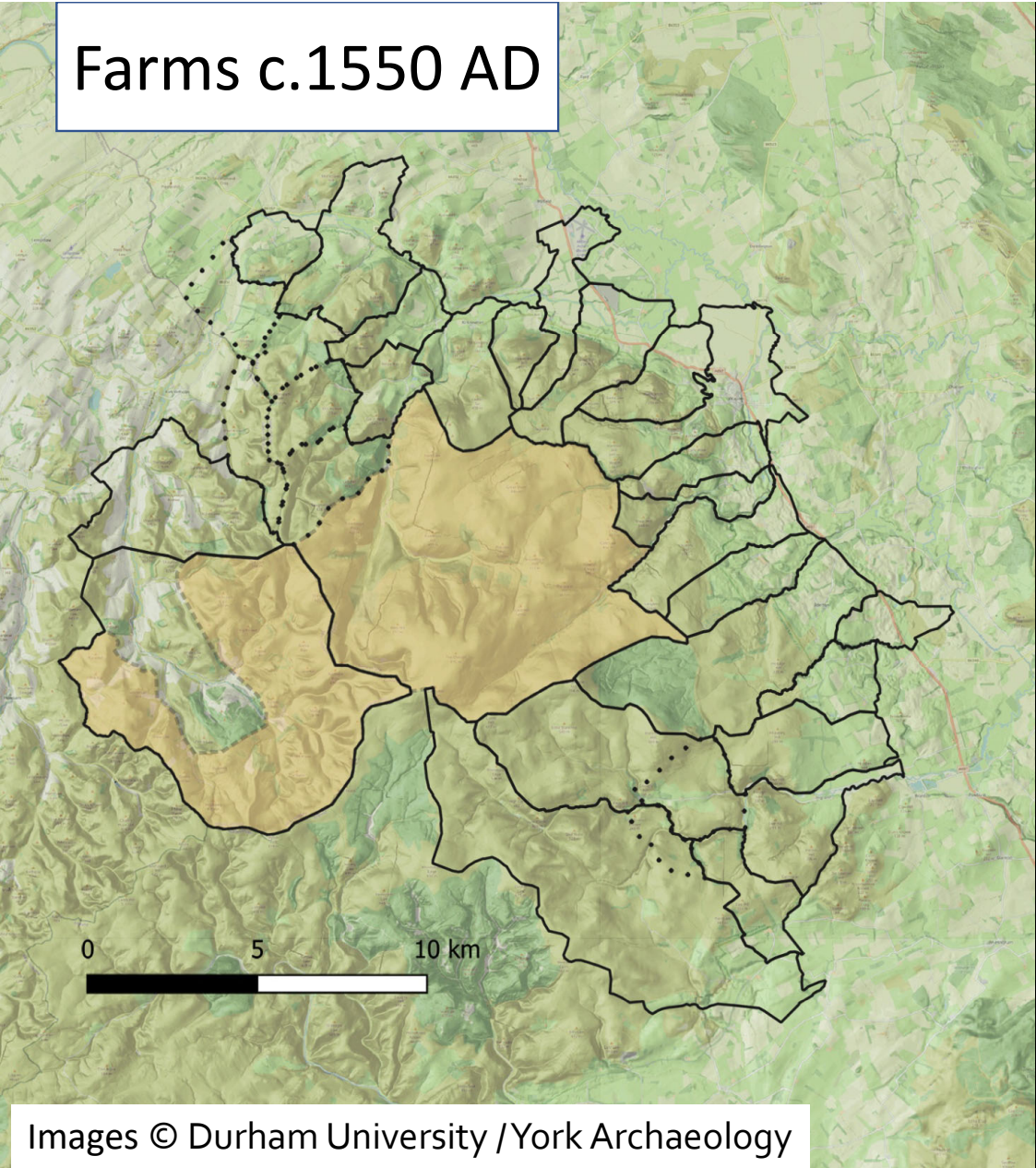


0 5 10 km

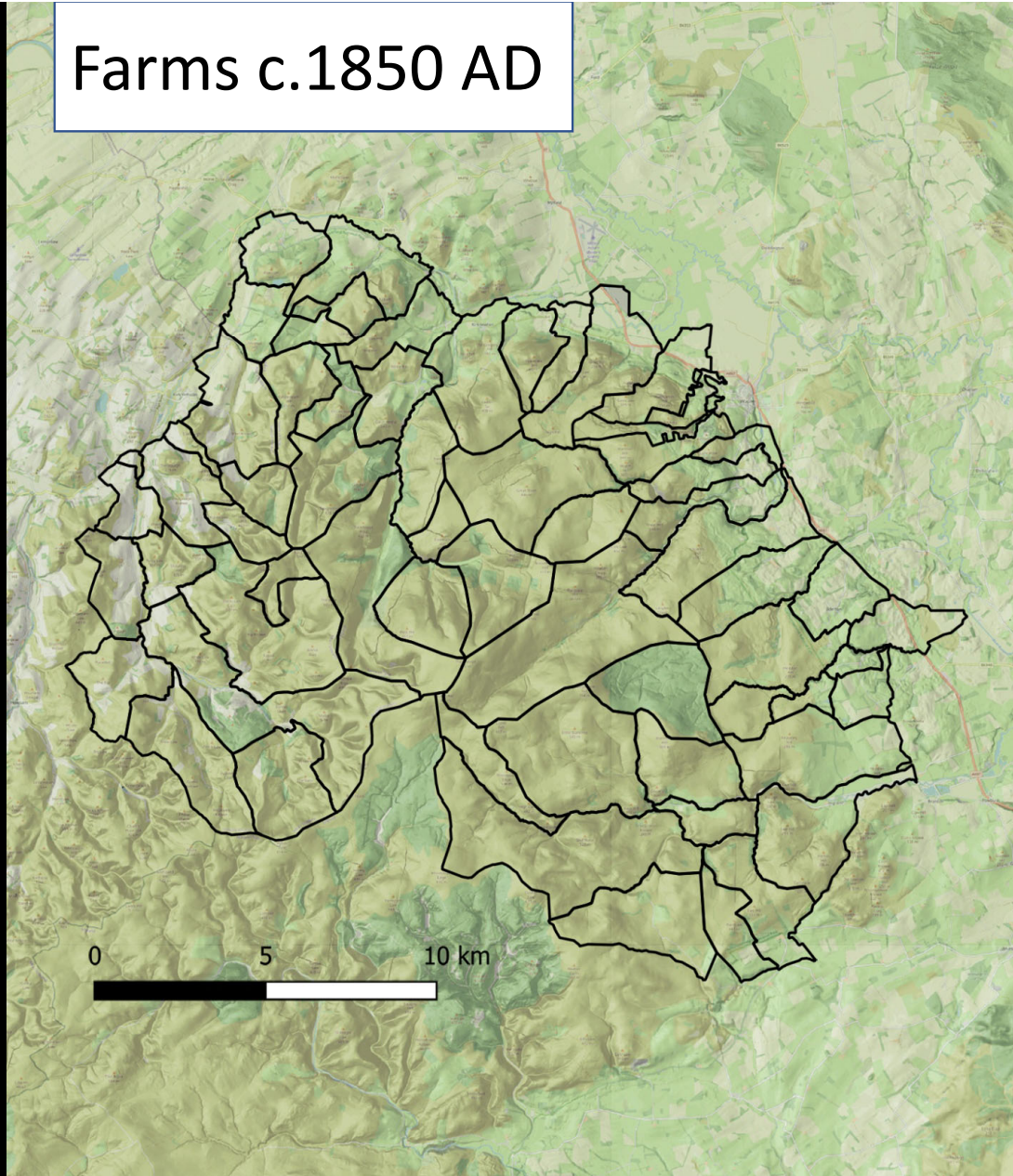
Melrose Abbey & medieval sheep farming

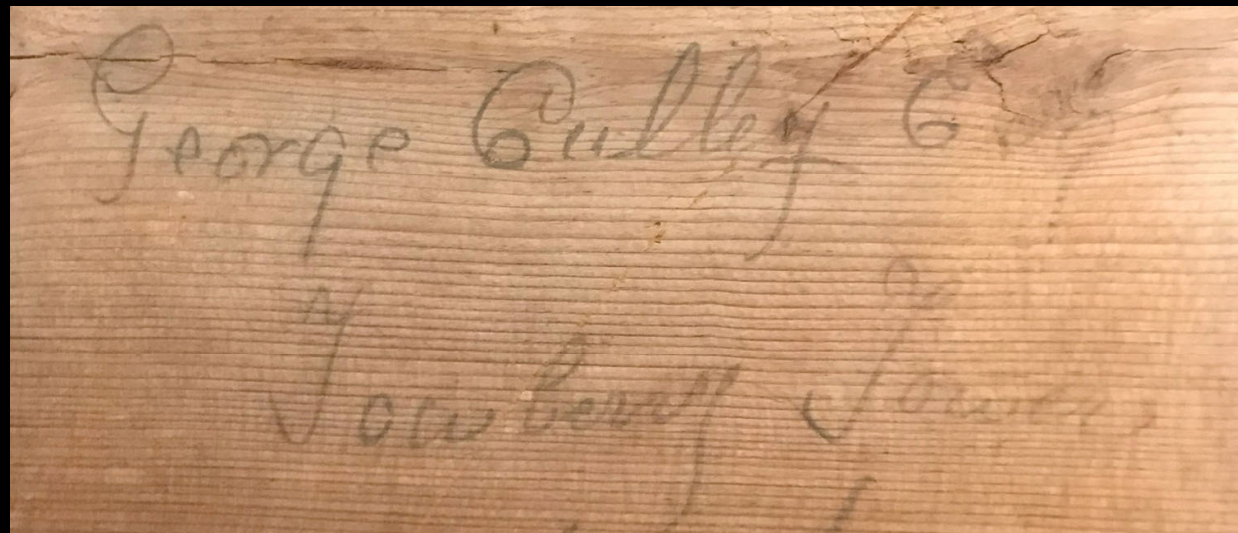
[Images removed for copyright reasons]

Farms c.1550 AD



Farms c.1850 AD





Photos: Chris Gerrard, Durham University



Living Heritage / Living Memory 1950s to present day

Photo: Chris Strickland (www.photographerchrisstrickland.com)

National Farm Survey, England (1941-3)

[Images removed for copyright reasons]

College Valley Estate

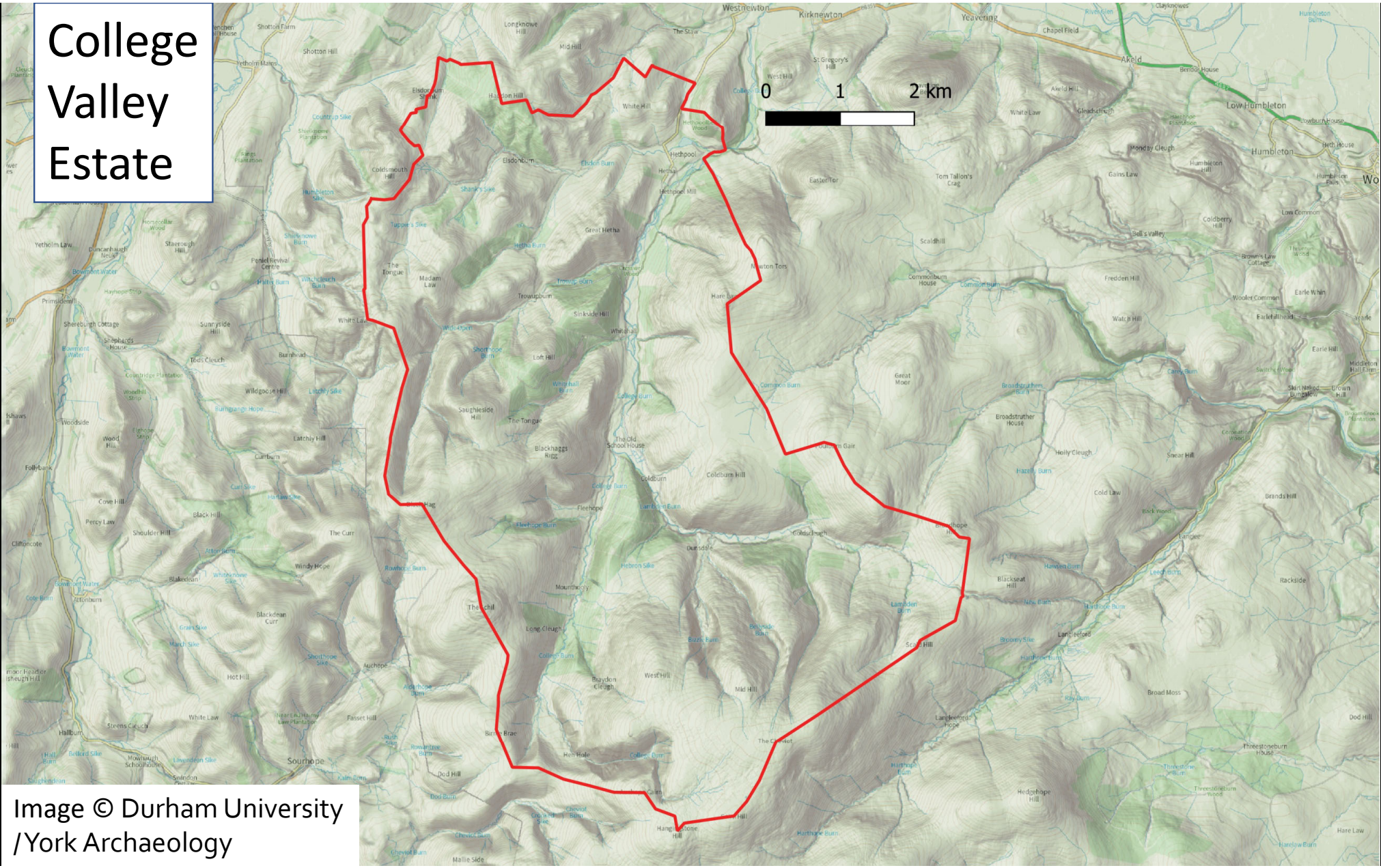


Image © Durham University /York Archaeology

'In Hand' Management

Landowner



Estate Manager



Shepherds &
Farm Workers

Tenanted Management

Landowner



Tenant Farmer



Shepherds &
Farm Workers

The Cheviot Gathering

[Images removed for copyright reasons]

Sheep dogs

[Images removed for copyright reasons]

Regional sheep breeds 20th-21st century

[Images removed for copyright reasons]

Cattle breeds: *Galloway*,
Luining and cross-breeds



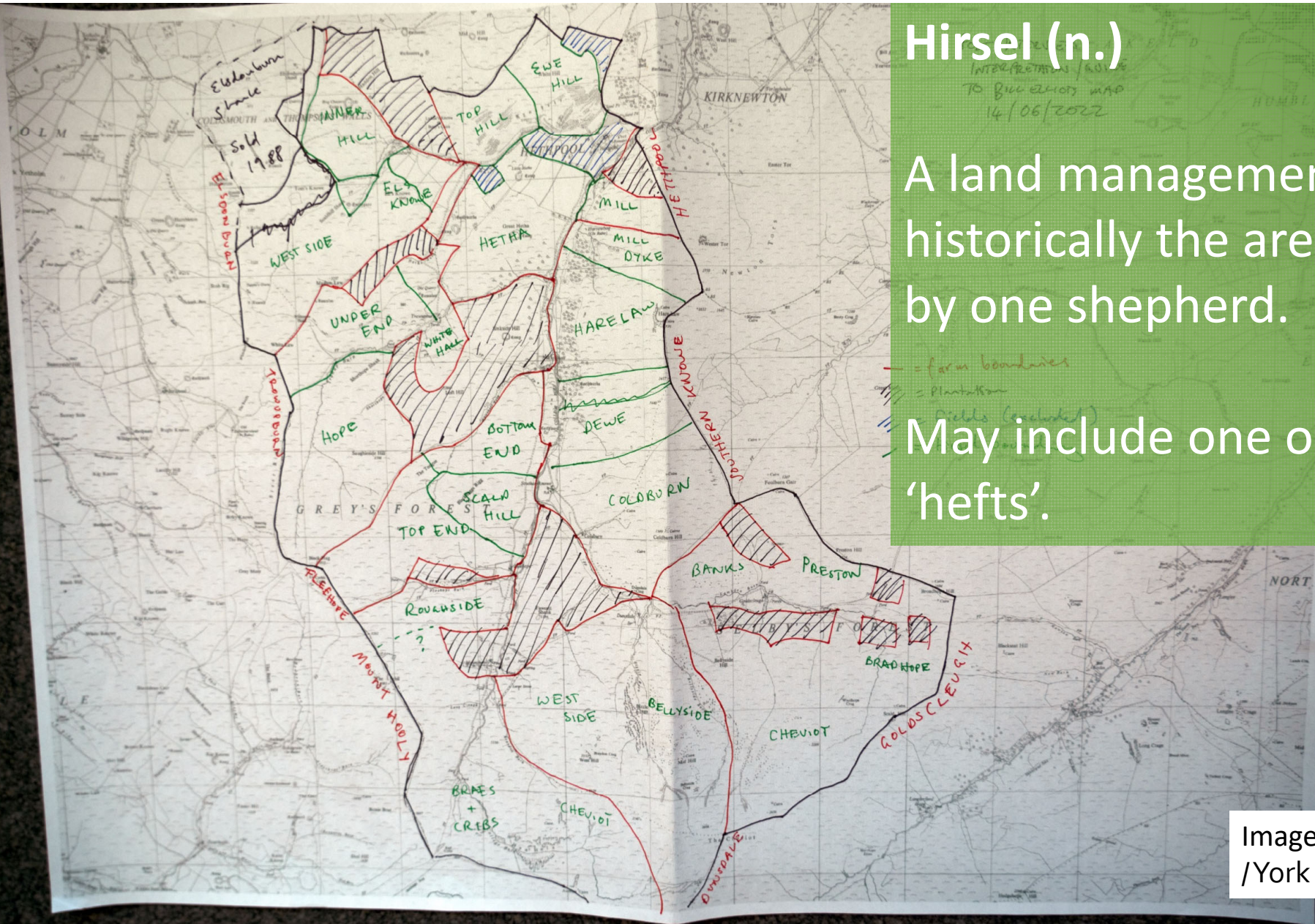
Photo: Skye McAlpine Walker, Inherit/York Archaeology

Heft (n.), hefting (v.), hefted (adj.)

The localised 'territory' of a flock of sheep on unenclosed land.

The sheep remain within the area by instinct and training.





Hirsal (n.)

A land management unit, historically the area managed by one shepherd.

May include one or more 'hefts'.

College Valley hirsels

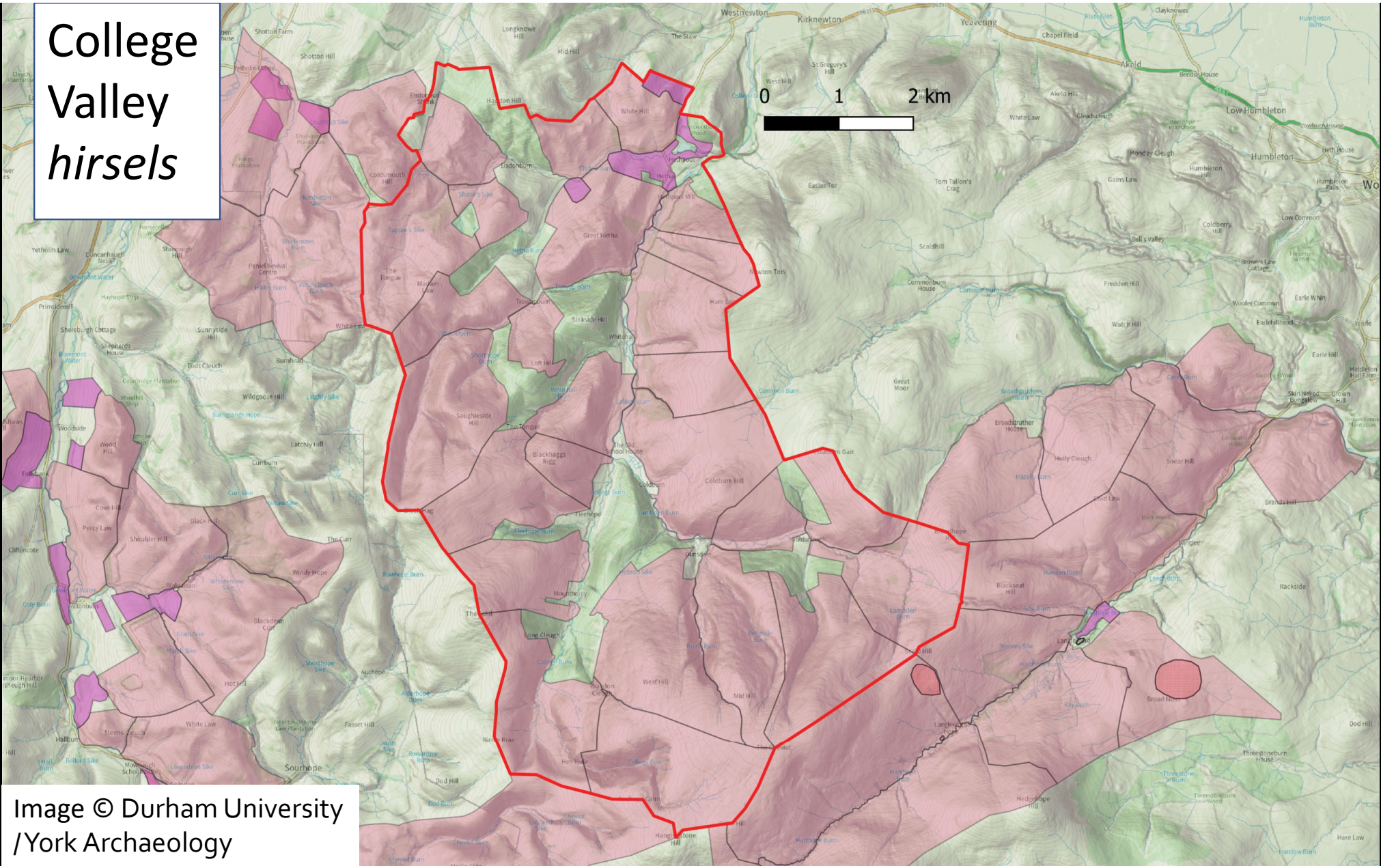


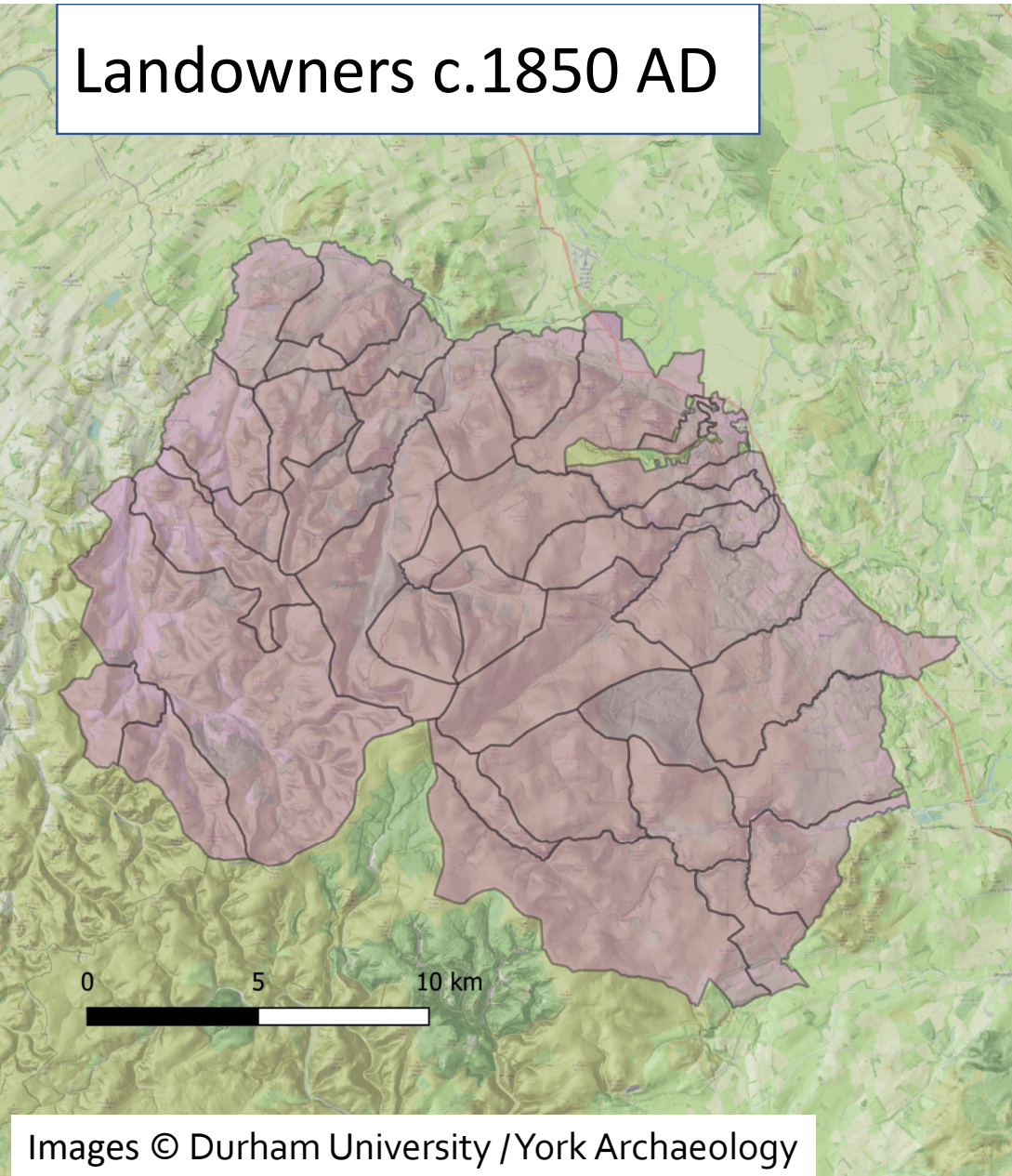
Image © Durham University
/York Archaeology

Hay meadows

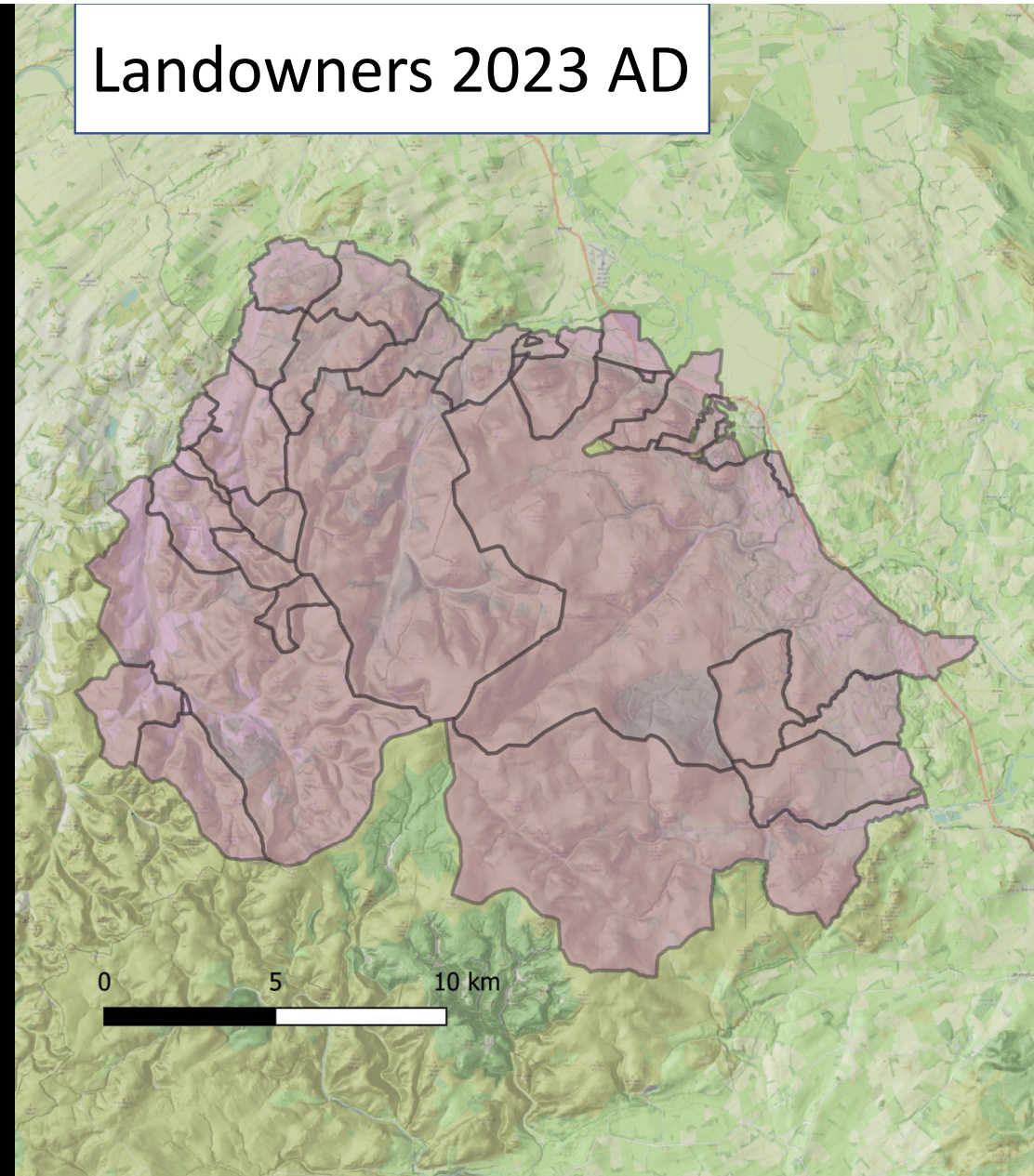


Photo: Chris Dalglish, Inherit/York Archaeology

Landowners c.1850 AD



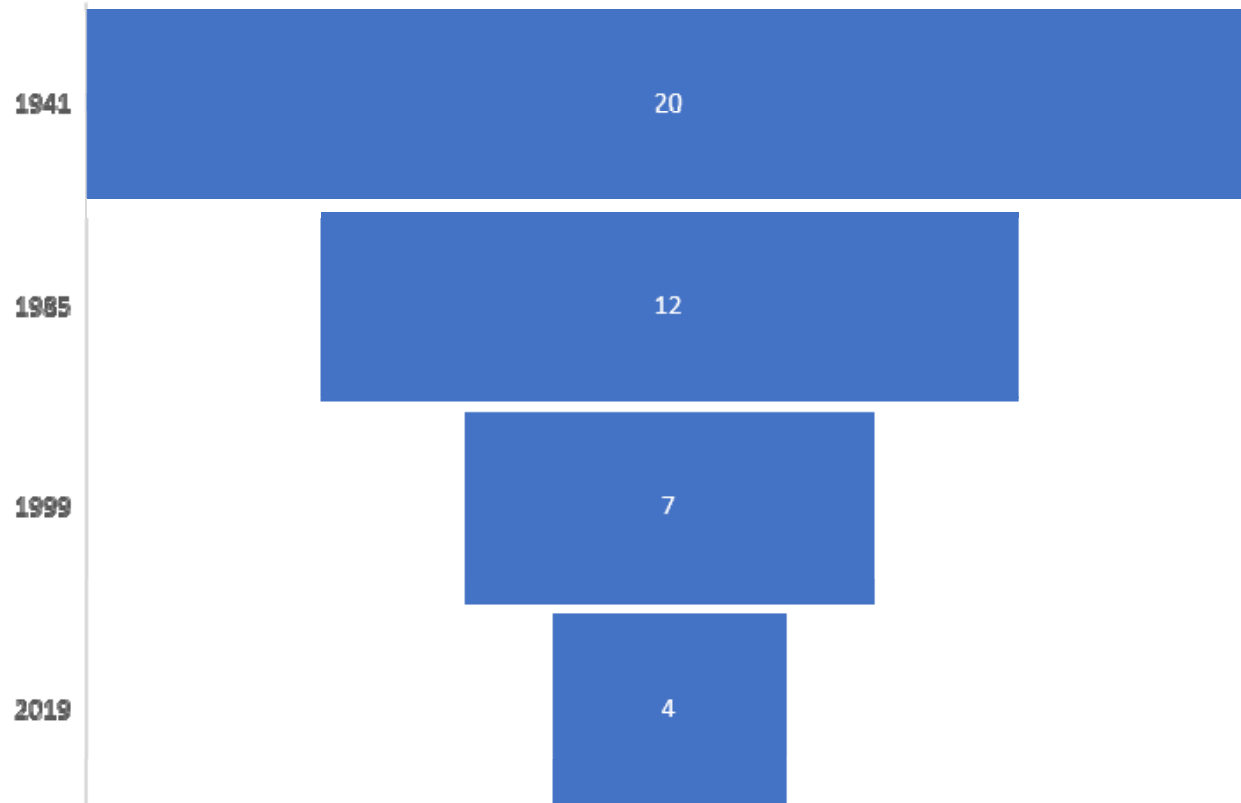
Landowners 2023 AD



College Valley Estates Workforce

12466 acres / 5045 ha

Farm Workers at College Valley



[Image removed for copyright reasons]

Changing Policy & the Future



Photo: Chris Strickland (www.photographerchrisstrickland.com)

UK policy 1940s-70s

European Common Agricultural Policy (CAP) 1970s-2020

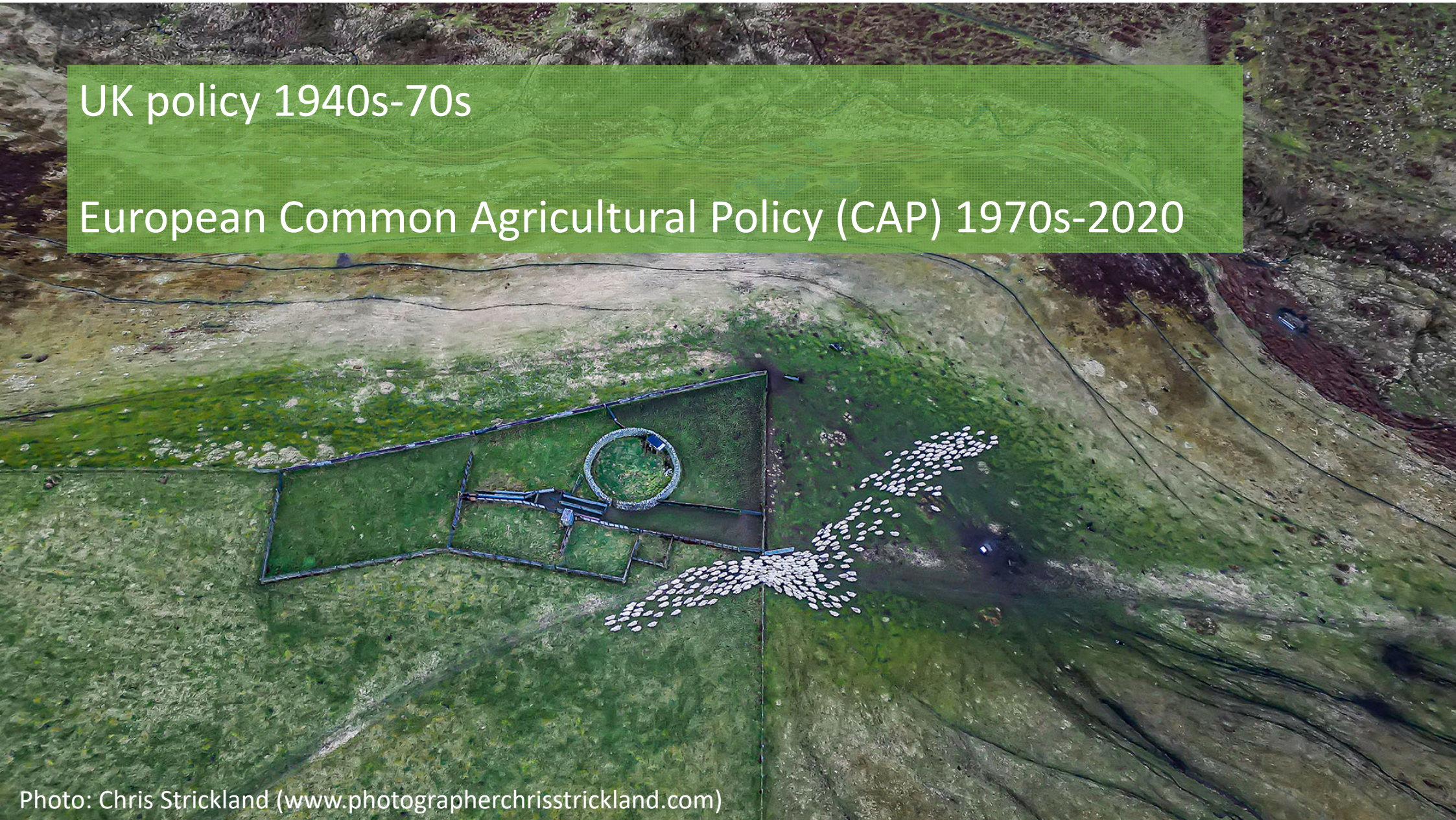


Photo: Chris Strickland (www.photographerchrisstrickland.com)

Post-Brexit policy:

England

- an end to universal basic payment
- 'Environmental Land Management' (ELM)
 - 'Sustainable Farming Incentive'
 - 'Local Nature Recovery'
 - 'Landscape Recovery'

Scotland

- universal basic payment
- additional payments for nature and climate action



Northumberland National Park:

Northern Upland Chain Local Nature Partnership (LNP)

‘High Nature Value’ farming

‘Farming in Protected Landscapes’

Photo: Chris Dalglish, Inherit/York Archaeology

An aerial photograph of a valley with a green semi-transparent text box overlaid. The valley floor is a mix of green and brown, with some snow patches. The surrounding hills are covered in dense green vegetation. A red tractor is visible in the lower right corner of the image.

College Valley, *Integrated Land Use Plan*:

“to create an exemplar of 21st century sustainable, integrated land management”

“The mid twentieth century ... increase in the numbers of ‘hefted’ sheep had a detrimental effect on the upland vegetation. Too many over-wintered sheep saw the reduction in quality and quantity of upland heathland vegetation”

[new practices inspired by] “how the land was managed before the introduction of hefted stock some 200 years ago”



Photo: Joanne Coates (www.joannecoates.co.uk)